



Read Me

UNILOGIC™ SOFTWARE

UNISTREAM™ AUTOMATION IDE

Unitronics' **UniLogic™** software is the programming Integrated Development Environment (IDE) you use to configure hardware, communications, and develop both Ladder control and HMI applications for **UniLogic™** control devices.

Contents

Minimum System Requirements.....	1
UniLogic Installation.....	2
Firmware Update and Management.....	2
Firmware Management.....	2
Windows USB Driver Installation.....	5
Windows XP.....	5
Windows 8/10.....	7
Disabling Driver Signature Enforcement.....	7
Manually Installing Driver, Windows 8/10.....	9
Known Issues.....	11

Minimum System Requirements

- 1.6 GHz or faster processor
- 1 GB of RAM
- 10 GB of available hard disk space
- 5400 RPM hard drive
- DirectX 9-capable video card running at 1024 x 768 or higher display resolution
- 32-bit colors
- Minimum requirements: Windows XP(SP3) and above.
***Note - UniLogic V1.21.xx and up does not support Windows XP**
- Recommended requirements: Vista (SP2) and above.
Note that all Windows versions must be installed with the latest service patches released by Microsoft.
Both x86/x64 systems are supported.

Notes Windows XP: the UniLogic™ installation will also include SQL 2008 R2 Express.

The UniLogic™ installation files for higher versions of Windows do not require SQL 2008 R2 Express.

UniLogic Installation

1. Download the UniLogic setup file.
2. Run the setup and follow the onscreen directions.

Firmware Update and Management

When you download a project, UniLogic checks to see if the firmware in the controller is compatible with the UniLogic version. If not, UniLogic displays the following message, which includes directions for updating the firmware.



In some cases, the download might proceed, but when it is complete, the controller panel displays a message with instructions: HMI Version Mismatch message.

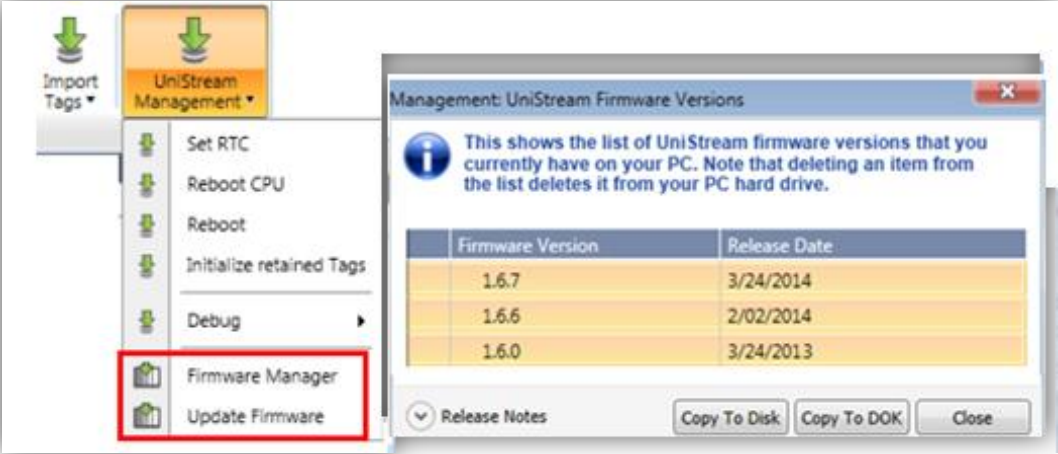
Firmware Management

The PLC tab on the program ribbon offers Firmware Management tools.

The instructions below refer to a DOK, which stands for Disk On Key. This may also be referred to as a USB Stick, Memory Stick, USB Drive, Flash Drive, or Flash Stick.

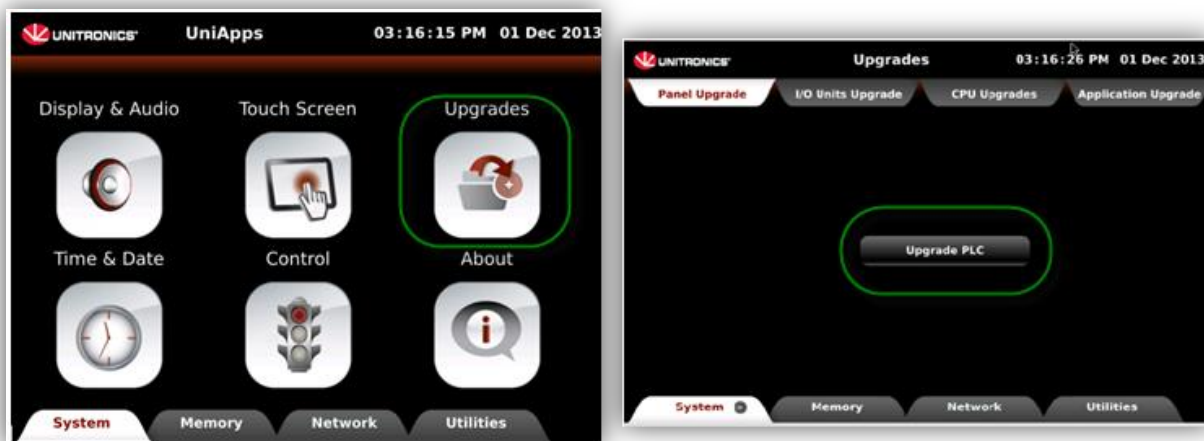
Click Firmware Manager to locate all firmware files on your PC. You can then select the desired firmware and copy it onto a DOK and install it in the controller.

If you have an Internet connection, you can click Update Firmware to connect to the Unitronics website and download any new firmware releases.

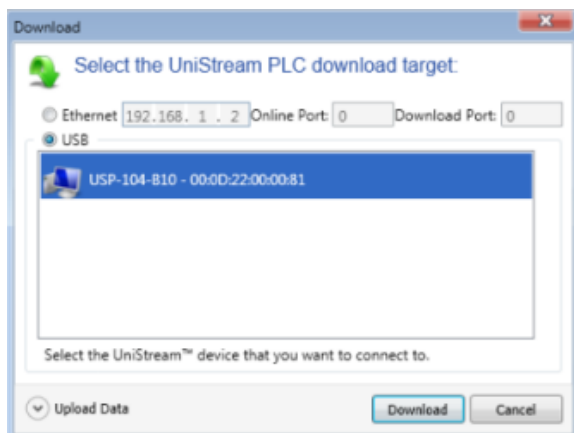


To install firmware via UniApps:

1. Plug a DOK containing the firmware into the panel's USB port.
Note that the DOK must be formatted to FAT32, be of **at least 4G capacity**, and have sufficient free space to contain the firmware.
2. Open UniApps by pressing the upper right corner of the panel for several seconds.
3. From the System tab, Select Upgrades.
4. Under Panel Upgrade, press Upgrade PLC.



5. Wait for the system to complete the process.



Windows USB Driver Installation

Depending on your version of Windows, you may need to install the USB drivers manually in order to establish UniStream - PC communications. Note that you can simply choose to connect to UniStream via Ethernet for application download, Online Test mode, etc, thereby skipping the need to install USB drivers.

Under Windows 7, the USB driver installs automatically without issues.

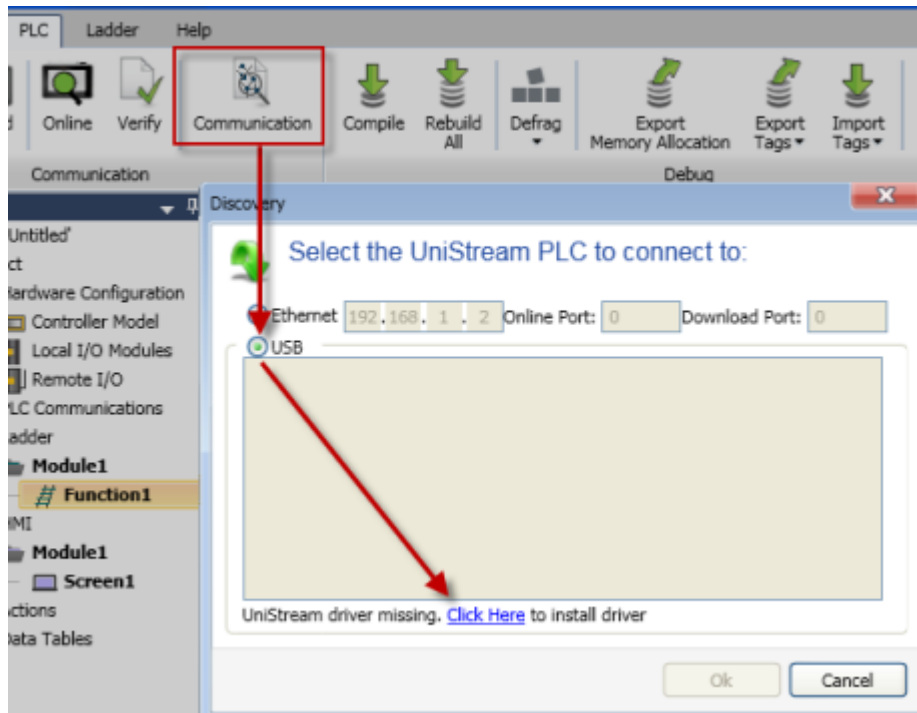
Windows XP

To install the driver manually, follow the directions below:

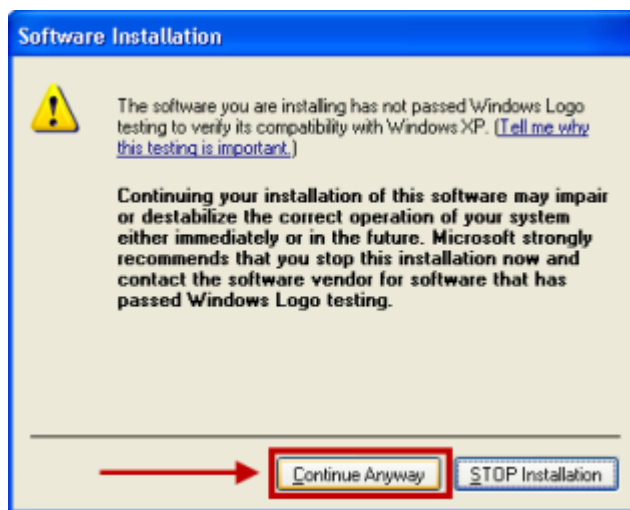
1. Connect the UniStream device to the PC using the USB cable.
2. The Found New Hardware Wizard opens; click Cancel.



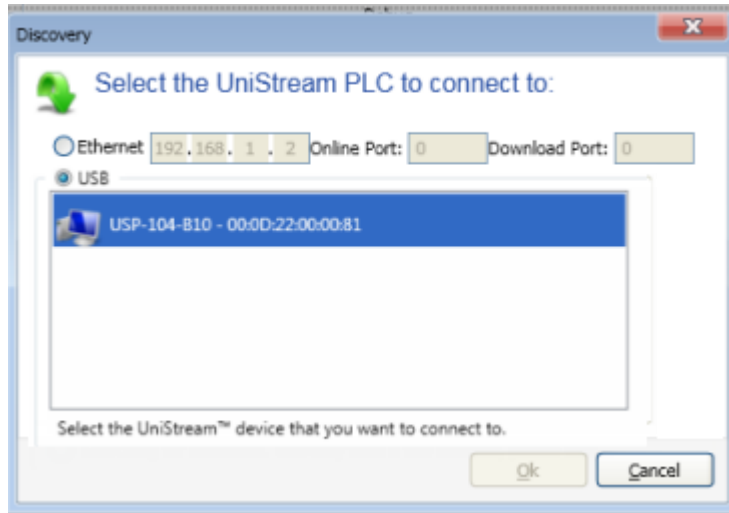
3. On the UniLogic ribbon, select PLC and then click Communication.
4. The Discovery window opens, ensure that USB is selected. If the USB driver is not installed, this information appears in the window; click on the hyperlink "Click Here" as shown in the following figure.



5. During the driver installation process, Windows may raise questions about testing and compatibility. Select Continue Anyway.



6. When the driver installation is complete, Discovery will begin searching for Hardware. When Discovery finds the connected UniStream device, it will appear in the list; and may be selected as the Communication Target.



Windows 8/10

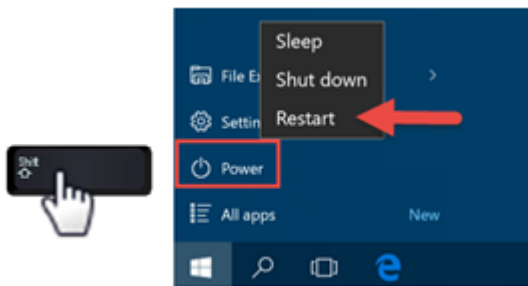
The PC to UniStream USB connection is via Ethernet. However, Windows 8 and 10 identify it (incorrectly) as a serial connection.

This is why you must install the driver manually according to the following instructions:

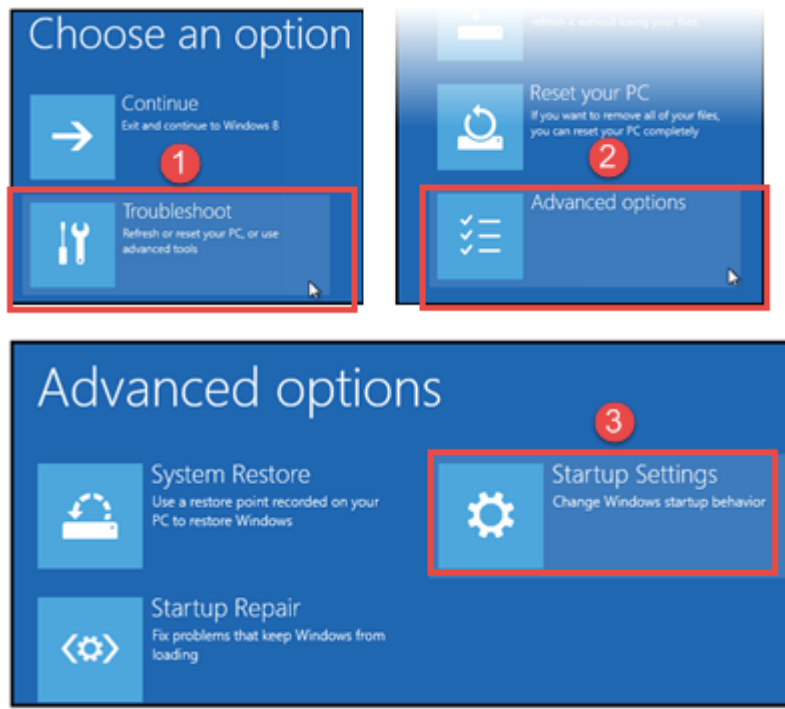
In addition, note that the UniStream USB driver is not digitally signed. This means that you must disable driver signature enforcement **before** you can install the driver.

Disabling Driver Signature Enforcement

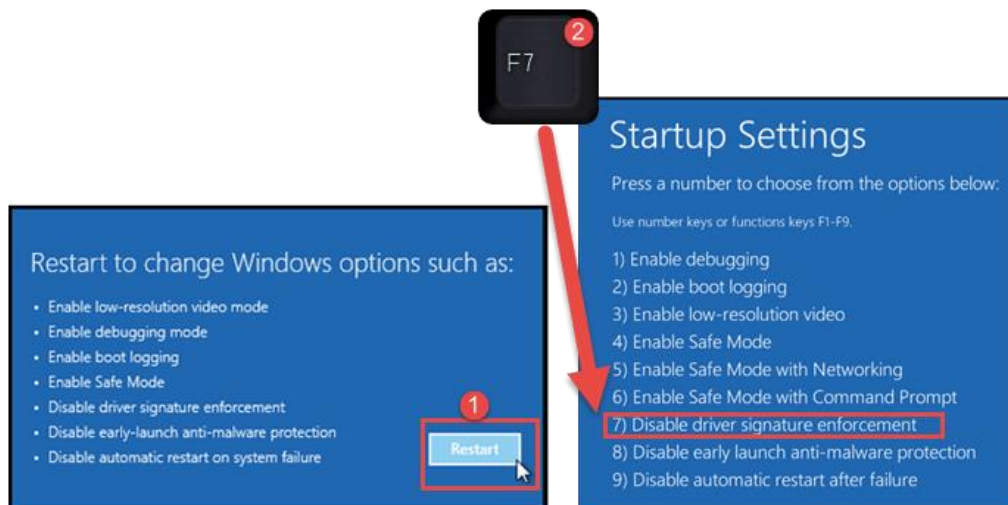
1. Hold down the Shift key while selecting Restart.
Restart is located under Power options menu (Windows 8: located under Charms or on the login screen) (Windows 10: located on the Start Menu).
The PC will reboot, enabling you to select Troubleshoot.



2. Select Troubleshoot > Advanced options> Startup Settings.

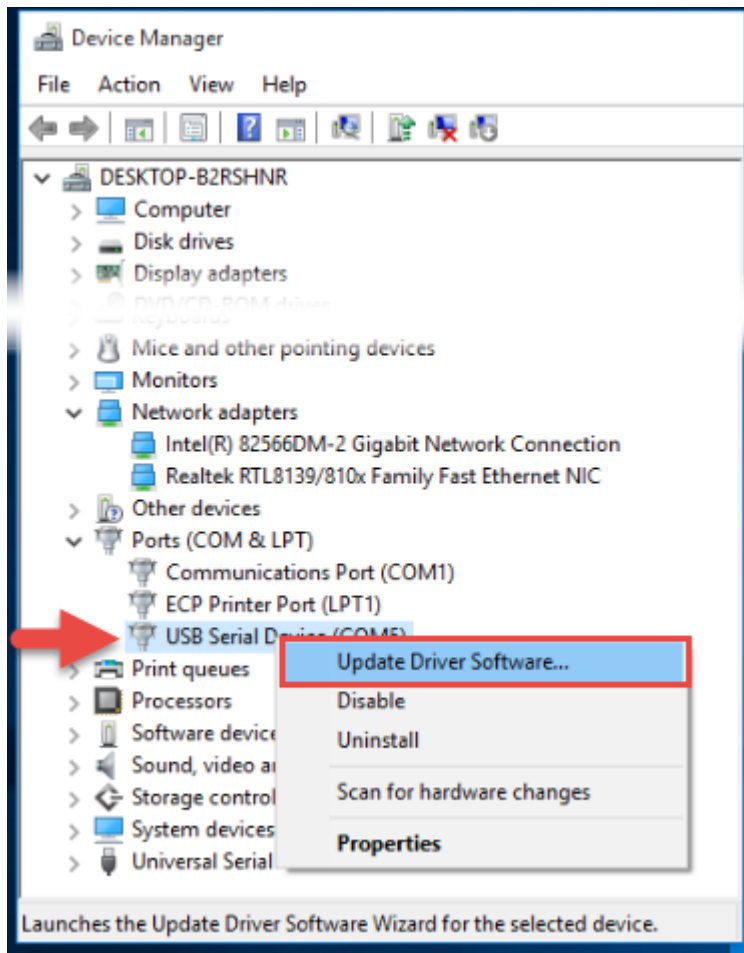


3. Click Restart, and when Startup Settings opens, press F7 to disable driver signature enforcement; upon restart, digital signature enforcement is disabled.

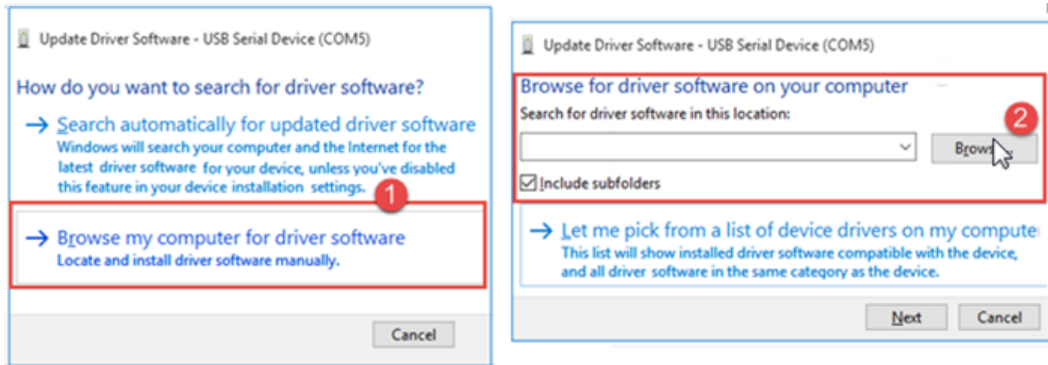


Manually Installing Driver, Windows 8/10

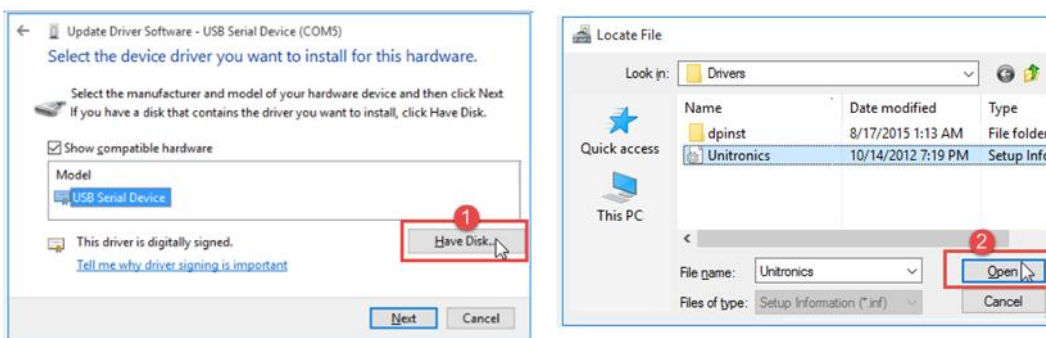
1. After you install UniLogic, connect your UniStream to your PC; and then open Device Manager.
The connected UniStream will appear as a USB Serial Device; right-click it and select Update Driver Software.



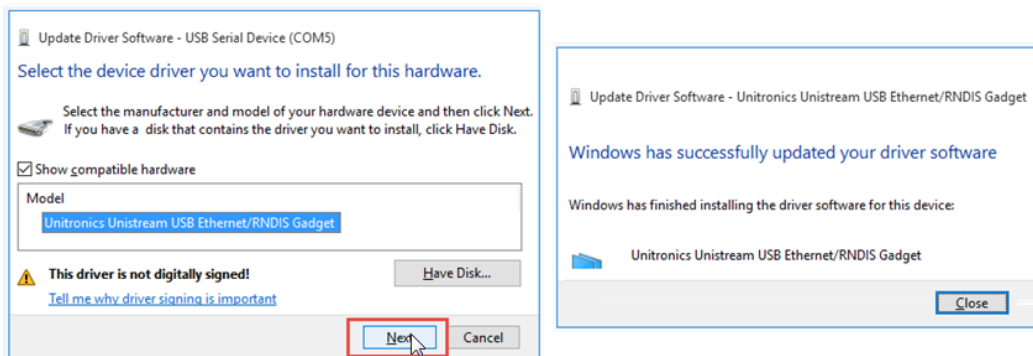
2. Select Browse my computer software; then click Browse.



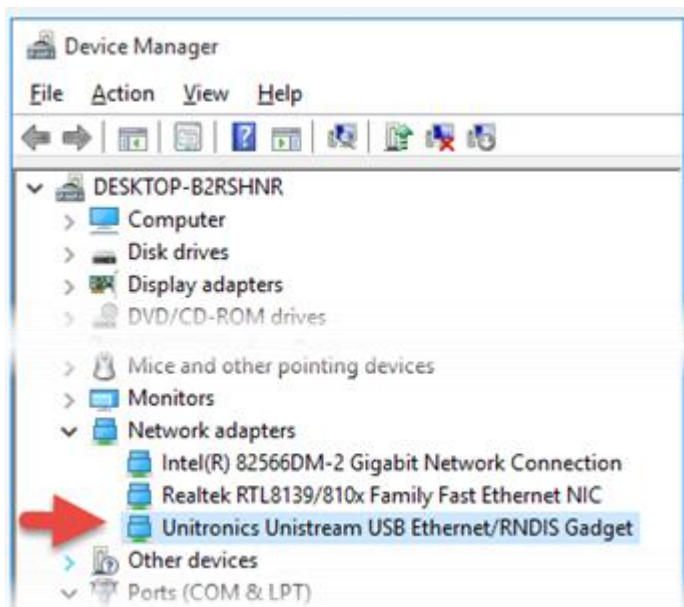
3. Click Have Disk, and then navigate to the driver location, typically C:\ProgramData\Unitronics\UnLogic\Drivers and then click Open..



4. The correct driver should now appear under Model, click next to install it. If Installation is successful, Windows displays a Success message.



5. Check Device Manager; the driver should now be listed under Network adapters.



Known Issues

Windows Versions and UniLogic Project Issues

The UniLogic installation uses different databases:

- Windows XP uses SQL 2008
- Window 7 and up use an internal database.

This causes issues when porting complete UniLogic projects, individual Ladder functions (UDFBs), and HMI screens:

- UniLogic V1.21.xx and up does not support Windows XP
- Opening a project that was written in Windows 7 (or later) in Windows XP will cause UniLogic to shut down.
- Trying to upload a project into XP that was downloaded using Windows 7 (or later)
- Importing Ladder functions and HMI screens that were written in Windows 7 (or later) in Windows XP will cause UniLogic to shut down.